

PRODUCT INFORMATION PACKET

Model No: 048C17D2029
Catalog No: S111
1/3,1800,DP,48,1/60/115/230
Open Drip Proof (ODP)



Regal and Marathon are trademarks of Regal Beloit Corporation or one of its affiliated companies.

©2018 Regal Beloit Corporation, All Rights Reserved. MC017097E



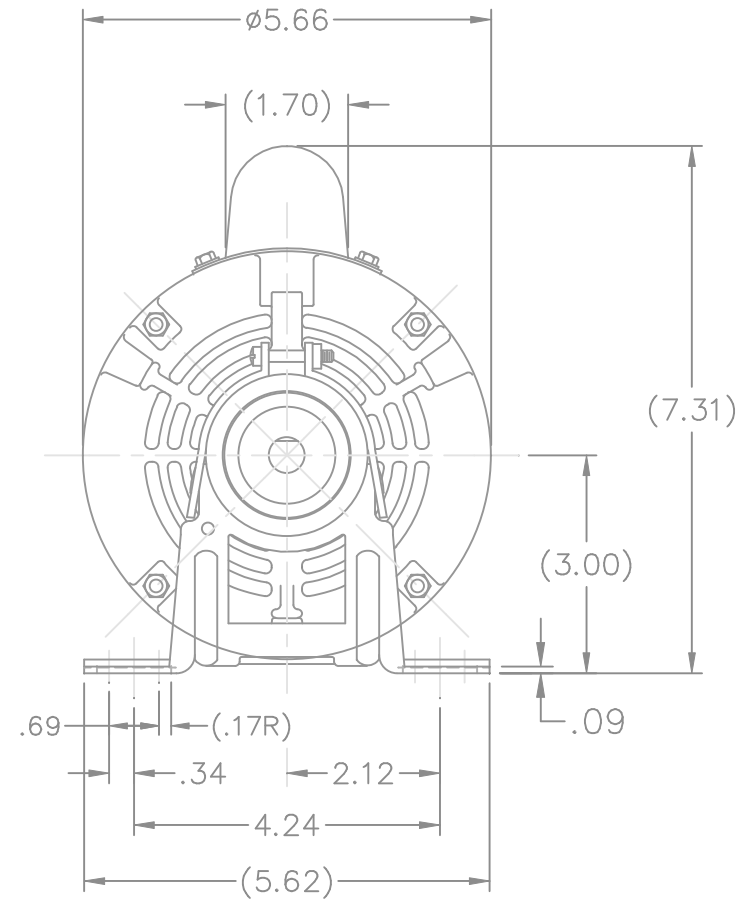
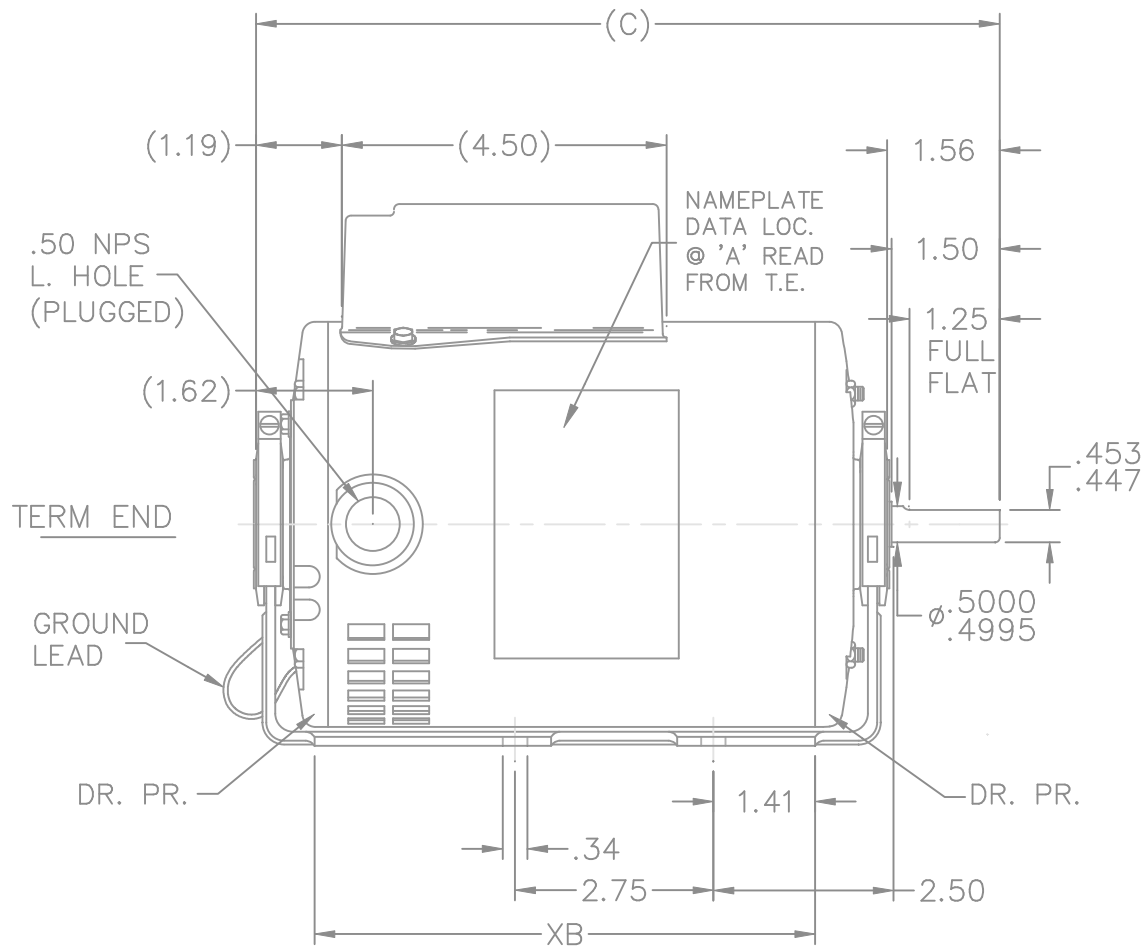
Nameplate Specifications

Output HP	0.33 Hp	Output KW	0.25 kW
Frequency	60 Hz	Voltage	115/230 V
Current	7.0/3.5 A	Speed	1725 rpm
Service Factor	1	Phase	1
Efficiency	59.5 %	Duty	Continuous
Insulation Class	B	Design Code	NO DESIGN CODE
KVA Code	L	Frame	48
Enclosure	Drip Proof	Overload Protector	Automatic
Ambient Temperature	40 °C	Drive End Bearing Size	6203
Opp Drive End Bearing Size	6203	UL	Recognized
CSA	Y	CE	N
IP Code	22		


Technical Specifications

Electrical Type	Capacitor Start Induction Run	Starting Method	Across The Line
Poles	4	Rotation	Selective Counterclockwise
Mounting	Resilient Base	Motor Orientation	Horizontal
Drive End Bearing	Ball	Opp Drive End Bearing	Ball
Frame Material	Rolled Steel	Shaft Type	NEMA 48
Overall Length	9.31 in	Frame Length	3.75 in
Shaft Diameter	0.500 in	Shaft Extension	1.56 in
Assembly/Box Mounting	F1 Only		
Outline Drawing	A-SS403754-575	Connection Diagram	A-EE9002M

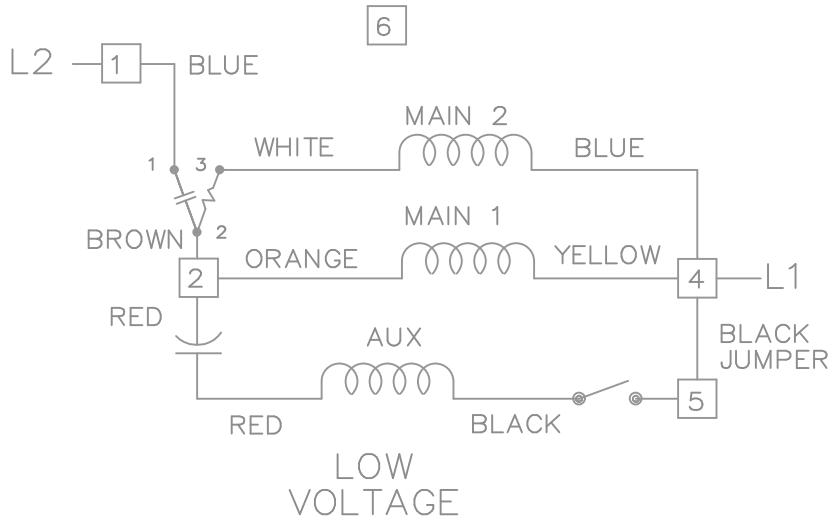
This is an uncontrolled document once printed or downloaded and is subject to change without notice. Date Created: 10/08/2018



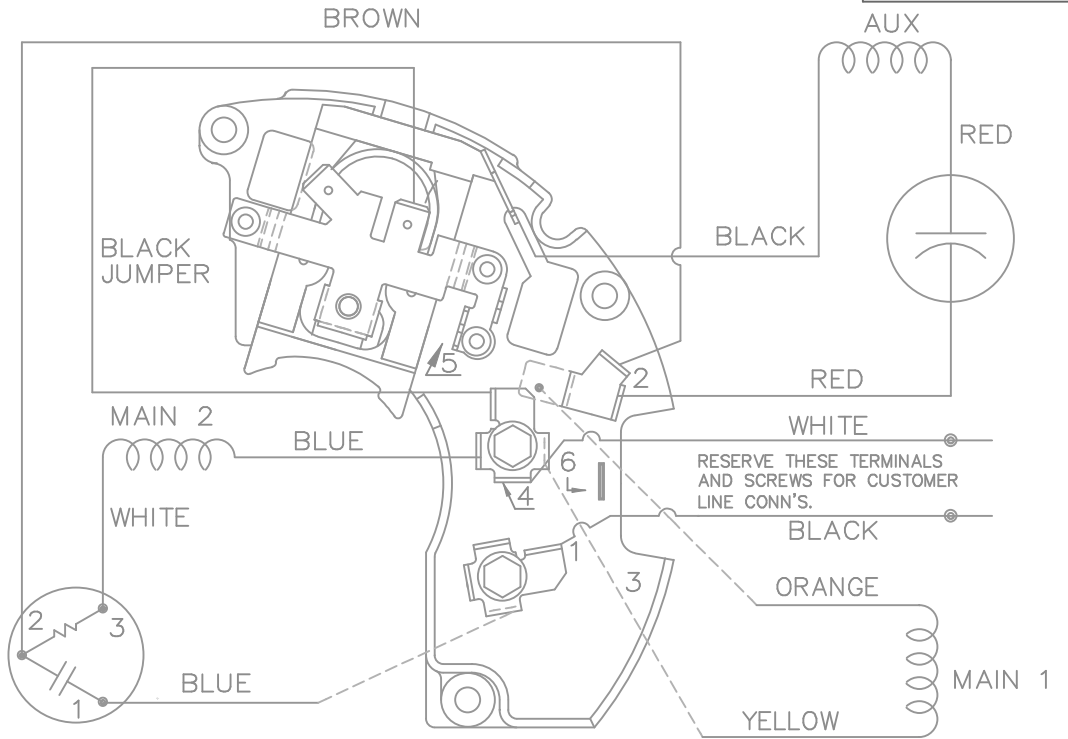
DASH	FRAME	C	XB
550	48	9.06	5.69
575	48	9.31	5.94
625	48	9.81	6.44
675	48	10.31	6.94

				TOLERANCES UNLESS SPECIFIED		 MARATHON ELECTRIC	DRAWN SP 08-01-2008				
				DEC.	INCHES		CHK NB 08-01-2008				
				.X	±.1		APPD SP 08-01-2008				
				.XX	±.03		SCALE 3=8				
				.XXX	±.005		REF SS79609				
				.XXXX	±.0005	FMF 08-2127					
NO.	REVISION	BY & DATE	CHK	ANG	±7'30"	MAT'L.	PREV				
			RFP			CAD FILE SS	SIZE	DRAWING NO.	PAGE	OF	REV.
			DIST	WP			A	SS403754			

THIS DRAWING IN DESIGN AND DETAIL IS OUR PROPERTY AND MUST NOT BE USED EXCEPT IN CONNECTION WITH OUR WORK ALL RIGHTS OF DESIGN AND INVENTION ARE RESERVED THIS IS AN ELECTRONICALLY GENERATED DOCUMENT - DO NOT SCALE THIS PRINT

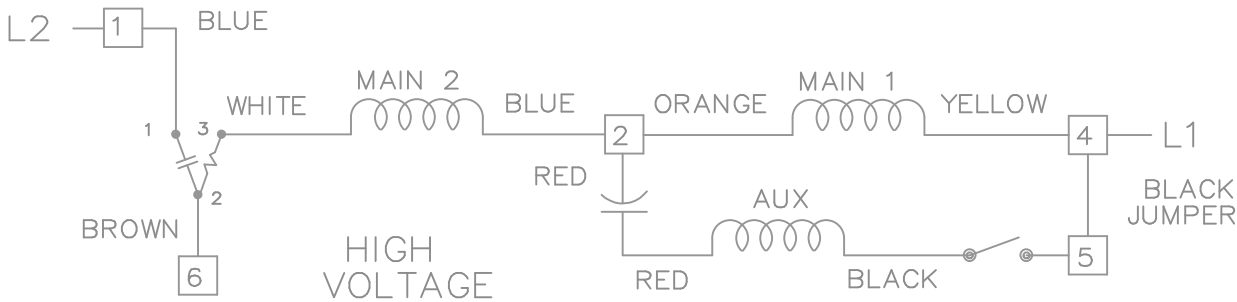


DUAL VOLTAGE CAPACITOR START REVERSIBLE ON TERM BOARD WITH OVERLOAD PROTECTION



VIEWING TERM END

LOW VOLTAGE CCW ROTATION SHOWN.



FOR HIGH VOLTAGE CONNECT BROWN TERM 2 TO TERM 6. CONNECT BLUE TERM 4 TO TERM 2.

TO REVERSE ROTATION EITHER VOLTAGE INTERCHANGE RED LEAD WITH BLACK LEAD.

				TOLERANCES UNLESS SPECIFIED		MARATHON ELECTRIC	DRAWN BW 02-22-1990				
				DEC.	INCHES		CHK	ML	02-22-1990		
				.X	± -		APPD	GK	02-22-1990	SCALE	1=1
3	ROUTING OF BLACK JUMPER	CN 35440	BJK 08-20-2002	.XX	± -	TITLE CONNECTION DIAGRAM				REF	
2	REVISED BLACK LINE LOCATION	CN 6427	RM 01-28-1991	.XXX	± -	48 FR. DUAL VOLTAGE REVERSIBLE					
1	NEW DRAWING		BW 02-22-1990	.XXXX	± -	MAT'L.				FMF	
NO.	REVISION		BY & DATE	CHK	ANG	FINISH				PREV	
				RFP		CAD FILE EE9002M	SIZE	DRAWING NO.	PAGE	OF	REV.
				DIST	WP		A	EE9002M			3

THIS DRAWING IN DESIGN AND DETAIL IS OUR PROPERTY AND MUST NOT BE USED EXCEPT IN CONNECTION WITH OUR WORK ALL RIGHTS OF DESIGN AND INVENTION ARE RESERVED THIS IS AN ELECTRONICALLY GENERATED DOCUMENT - DO NOT SCALE THIS PRINT

